



ADDRESS: Ilioupoleos Avenue 122 Dafne Athens Greece 17237

PHONE: 2130032018 FAX: 2130032018

EMAIL: info@msce.gr

SITE: www.msce.gr

FIRM BACKGROUND

MSCE Technical company was established in 2010 .

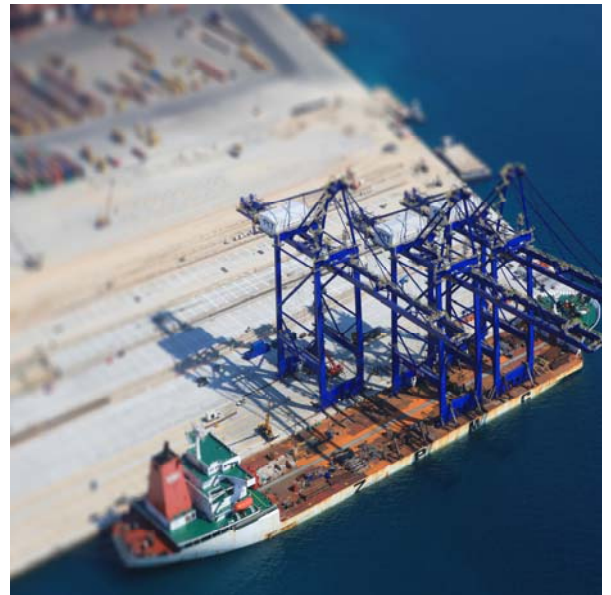
The main team is composed by **Saliagkopoulos Kostas** Mechanical Eng, **Maniatis Elias** Electrical Eng, **Kouinis John** Mechanical Eng, **Plessas Nikos** Mechanical Eng and other permanent collaborators Engineers.

The company is registered in the Commercial & Industrial Chamber ACCI and the Technical Chamber of Greece TEE.

The members of the company in cooperation with each other as partner have developed and participated in the drafting of design and construction, in numerous private and public projects. Every member of the design team has gained great experience through his participation in major projects that have been constructed in Greece.

the company's main guiding principle is to apply to projects involving all the laws and rules of international standards, but always taking into account in the design of these projects techno-economic criteria.

The company's aim is the continuous improvement of service and constant development in the field of electromechanical installations.



SERVICES

The company's main activity is the elaboration of electromechanical studies and consulting services to public and private projects

Business scope

Electromechanical Studies supervision and consulting services for building projects, highways, ports, airports, marinas, container terminals, etc.

Hydraulic infrastructures Studies supervision and consulting services such as water pumping stations, urban drainage and irrigation of wider areas, water treatment plants (water treatment), wastewater treatment plants (biological), water reservoirs (dams), water distribution control



PROJECTS



BUILDINGS & INFRASTRUCTURE

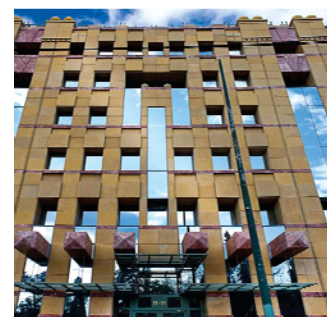
- Electromechanical design and project management services for the construction of Pier II Pier III West Pier III of the Piraeus Port Authority, Port facilities at container terminal (running project)
- Electromechanical design and project management services for the construction of the Xenia hotel in Skiathos Inland (running project)
- Participation as Consultants for the completion of the tender dossier of the project expansion of laboratory space of buildings and surroundings of IIBEA
- Electromechanical design and project management for the Building of the Greek Electricity Transmission System Operator (DESMIE) in Piraeus
- Participation in the measurement of contractors work and management for NAVARINO RESORTS- NAVO DUNES ITDA Messinia
- Participation in the E / M Design of the offices of the Greek Parliament on Amalias Street 22-24
- E / M Design of Supermarkets CARREFOUR facilities in Agios Dimitrios
- E/M study for manufacturing prototype bioclimatic school complex in ZEP Kozani with application of renewable energy technologies.
- E/M study and tender documentation of the operation of landfills in Epirus.
- E/M Study and preparation of tender documents for the construction of municipal slaughterhouse for pigs, sheep and goats to the Municipality of Amorgos
- Participation in the E/M Study of the Terrestrial zone and terminal facilities of the new Port of Igoumenitsa



PIRAEUS CONTAINER TERMINAL



DESMIE BUILDING



GREEK PARLIAMENT BUILDING

- E/M study for 5 star hotel complex of 125 rooms and suites plus up to 40 residential villas in Messina
- E/M Study for tourist Port facilities in Rhodes inland
- E/M Design and construction for the conversion of the old hotel in the Red Port in Rafina in luxury residential building
- E/M Design and construction of Patisserie building and workshop on Alekos Panagouli Street in Nea Ionia



PATISSERIE BUILDING IN NEA IONIA



IGOUMENITSA PORT

HYDRAULIC & INFRASTRUCTURE

- Study of land reclamation projects (first phase) in marsh county areas in Aitolokarnania .
- Participation in the contract studies: Construction of Water Supply in Lesvos Island (A Phase Dam Tsiknias) - Preliminary and Final Hydraulic design.
- Participation in the contract studies: Study of external Water Networks from Dam Havrias in Halkidiki & Water Treatment Plants - Preliminary and Final Hydraulic Design and other projects
- Study for Irrigation Dam and Irrigation Network in Dipotamia N. Kastoria. - Ministry of Rural Development
- Study for the project of the Water Transfer networks from Anavalos to Ermionida – Ministry of Rural Development
- E/ M Study for the construction of the Triantafilia Dam in Florina - TENA ATEVE
- Participation in the study for the projects: collection processing transmission and distribution of Psahna & Kastella settlements Sewage of Dirfys-Messapion - Municipality of Tripoli
- Participation in the study of Sewerage and Sewage Treatment Plants of Levidi



PROCESSING PLANT PSYTTALIA



WATER TREATMENT PLANT - RHODES



PUMPING STATION 2500m³ / h
WITH POSSIBILITY OF EXTENSION TO 5000m³ / h

- Consultant management services for the project "Water supply from Rhodes Gadouras dam - Construction remaining dam works and transport projects and refineries' -
- Study for the construction of the irrigation network in agrarian Region Iraclia - Head Pumping Station Project -
- Technical consultancy services for the Project 'Sludge Drying K.E.L. Psittalia & Gas installation in KELPS and in Drying Unit -



BARRIER EVACUATOR AND ECOLOGICAL SUPPLY